

Connecting to a VDI Desktop from home

In order to connect to the college VDI system, you need to download the VMWare View Client. This is available via the links below

Windows 32-Bit System

[VMware Horizon client for 32bit Windows](#)

<http://files.oldham.ac.uk/VMware-Horizon-View-Client-x86-3.1.0-2085634.exe>

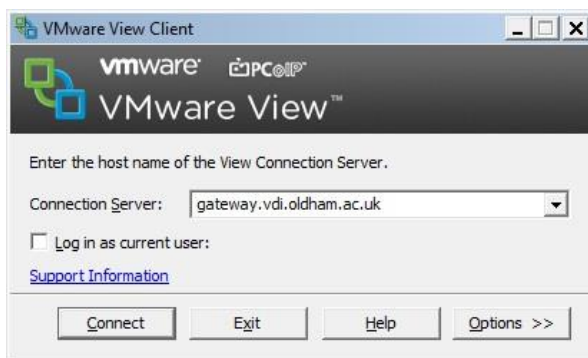
Windows 64-bit System

[VMware Horizon client for 64bit Windows](#)

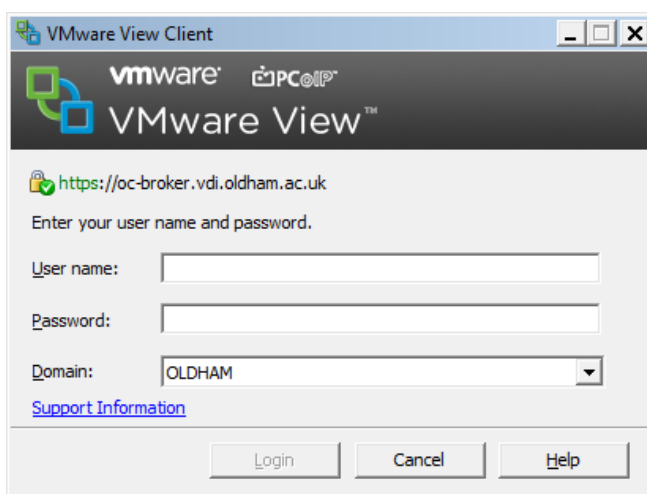
http://files.oldham.ac.uk/VMware-Horizon-View-Client-x86_64-3.1.0-2085634.exe

Install your chosen client, and run it.

When prompted to enter a View Connection Server, enter “gateway.vdi.oldham.ac.uk”



Click Connect and you will be prompted with a familiar college login box. Add your credentials here. Make sure the domain is set to OLDHAM.



Once logged in, you will either be taken directly to your desktop, or be offered options of desktop. This will depend on the user.

You should now see the college system as you do when logged in on campus.